

## 2.3 Adjustment of the Sample Vial Delivery Position (Teaching)

### 2.3.1 For AOC-20i

**NOTE** When using auto sampler, the position of sample vial delivery to AOC-20i (auto injector) should be adjusted. Be sure to adjust it when installing auto sampler.

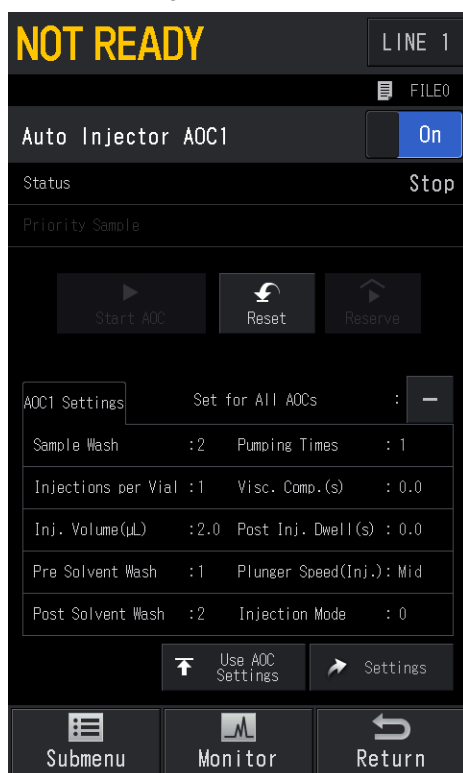
#### ■ Procedures

1

Press  (HOME) - [AOC] and check whether the auto injector control is [Off].

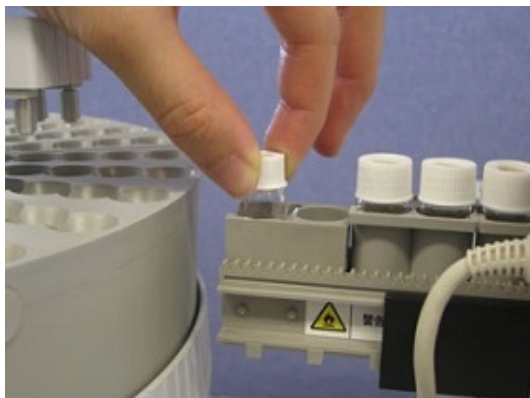
2

Hold down the [FUNCTION] key and [MONITOR] key on the AOC-20i and switch the auto injector control to [On].



3


After initial operations of auto injector and auto sampler are completed, put sample vial to be used (for 1.5 mL or 4 mL) at the left end of rack of auto injector.

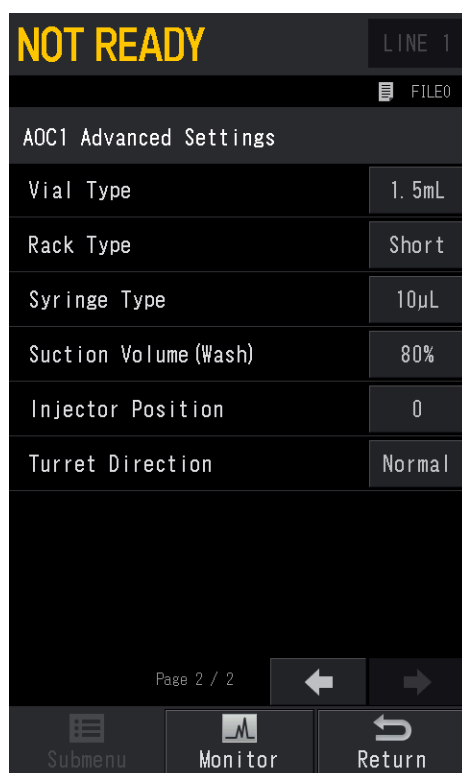


2

4

Set up the rack position of auto injector.

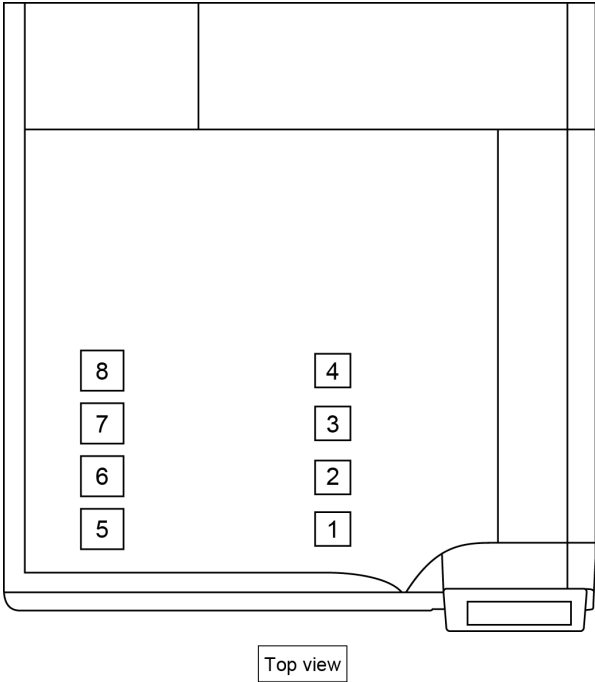
- 1 Press  (HOME) - [AOC] - [Settings] - [Submenu] - [Advanced Settings].



- 2 Set up the [Injector Position].  
The instrument can store up to 3 rack positions.  
Select a number (0 to 2) where rack position is stored.

**NOTE** The following positions are stored as defaults, however, be sure to adjust it because deviations may be caused by manufacturing tolerances.

No.	Default position
0	Rack position for the previous instrument
1	Position when AOC-20i is installed on the 6th injection port
2	Position when AOC-20i is installed on the 7th injection port

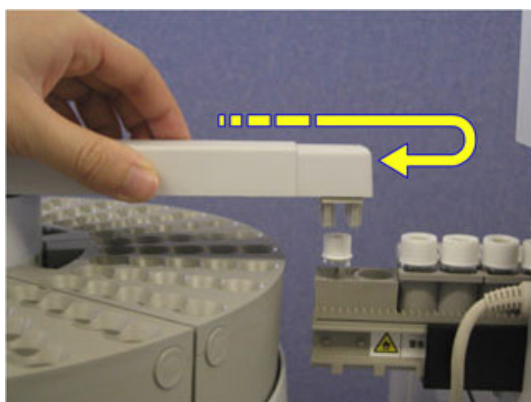


**5****Set display of auto injector to [F78].**

- 1 Press [FUNCTION] key of auto injector.
- 2 Select "078" using number select keys.
- 3 Press [ENTER] key.

**6****Move the arm of auto sampler to the position of sample vial set in step 2.**

**NOTE** Extend the arm with a margin and return it to set it just above sample vial.



7

In up/down direction, set it at the height shown in the photo.

**! CAUTION**

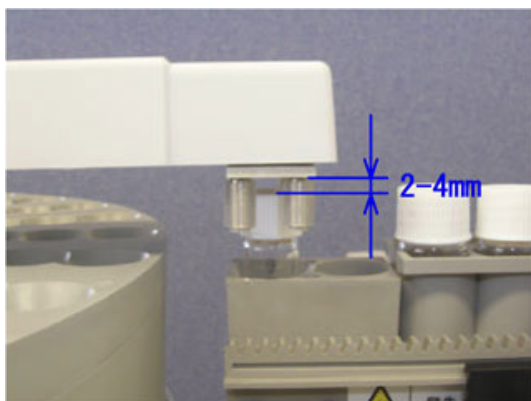
Prohibition

Do not move the arm while holding the end of the arm.

If you hold it by hand with excessive force, it may damage the instrument.

Use [SAMPLE WASH] key, [SOLVENT WASH] key, and [NUMBER OF INJECTIONS] key of auto injector.

- SAMPLE WASH: Up
- SOLVENT WASH: Stop
- NUMBER OF INJECTIONS: Down



**NOTE** It takes some time before starting up/down operation. (a few seconds)

8

Select "001" using number select keys and press [ENTER] key.



The gripper at the arm end moves. It grips the cap of sample vial and returns to home position.